

GIVING DIRECTIONS

There are many ways to give directions.



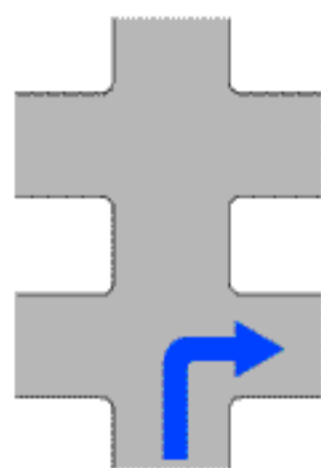
Turn left



Go straight on

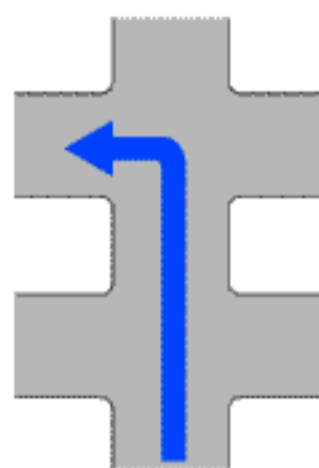


Turn right



Take the first right.

the second



Take the second left.

the first

It's next to the...



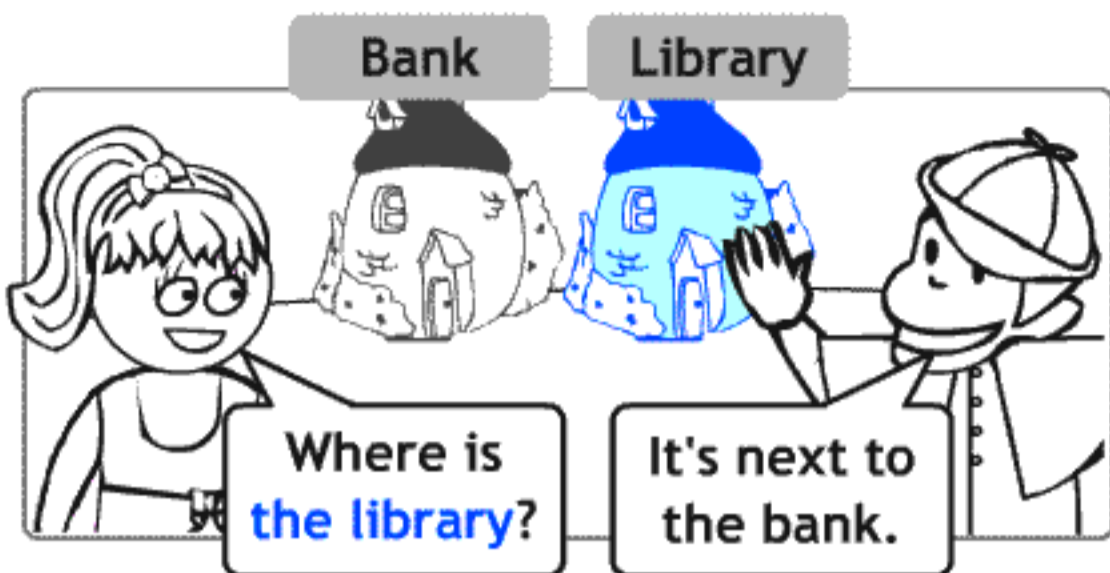
It's opposite the...



It's between the ... and the...



GIVING DIRECTIONS



Excuse me, where is the church?
It's opposite the park.

Where is the restaurant?
It's between the hotel and the swimming pool.

I CAN SAY

Where is the...?

It's next to the...

It's between the...
and the...

It's opposite the...



Excuse me, how to get to the restaurant?
Take the first right. Then go straight on.

Excuse me, how to get to the post office?
Go left here and then straight on.

I CAN SAY

How to get to the...?

Go straight on.

Turn left.

Turn right.

